





## TRI PLATES

CROC's patented Tri-plate heating technology provides 3x the smoothing power than other irons available today. CROC's patented technology features two separate heating elements, positioned in the top plate to generate 2x the heat, while the bottom plate hosts its own separate heating element. A true innovation in professional styling.



## DIGITAL CONTROL

Accurate temperature control reduces hair damage. Accurate electric control gives effective motor performance and longevity.



## CROC'S BLACK TITANIUM

Black titanium plates reduce static, are non-stick, add shine and create a smooth, effortless glide.



## ATR (AUTOMATIC TEMPERATURE RESERVE)\*

Another patent pending, innovative design brought to you by our CROC team of engineers, ATR is a revolutionary design in both safety and function. Automatic Temperature Reserve will automatically reduce the working temperature to 350 when unattended between uses. When picked up, the temperature will quickly climb back to the reserve temperature. This functional feature extends the longevity of the iron while also keeping the handle cool.



## AUTO SHUT OFF

A special safety feature that helps to protect the user and their environment. When the tool is left unattended for some time, the Auto shut off feature is activated. Your iron will manually power itself off.



## HEAT INDICATOR\*

Color changing heat indicator is a heat sensitive safety feature, changes color to alert the user when the iron is hot and ready to use.



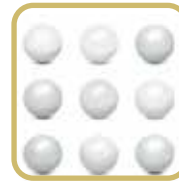
## HYBRID POWER\*

Combining AC Power and DC accuracy allows for optimum power by using minimum electricity.



## DUAL VOLTAGE

Accurate temperature control reduces hair damage. Accurate electric control gives effective motor performance and longevity.



## CERAMIC BALLS

100% Ceramic spheres help to activate and ionize water molecules while purifying the air. The ceramic spheres filter the air containing carbon dioxide to a combination of pure oxygen and negative ions that helps to purify and repair the hair.



## INFRARED RAY\*

1. Infrared Ray provides faster heat penetration through the hair from the outer surface to the cortex saving time and the integrity of the hair. Thermal conduction creates a uniform temperature inside and out leaving less frizz and friction damage while sanitizing the hair.
2. Damage to the cuticle layer is minimized by the elimination of internal and external chafing of the hair.
3. Keeps the desired temperature constant with no sudden fluctuations, and leaves the hair resilient with detoxifying and deodorizing effects.





HAIR STRAIGHTENERS

CROC



Powerful Technology. Superior Results. Designed in *California.*



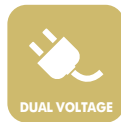
The CROC Premium iron is raising the beauty bar with its ability to bring you the perfect mix of comfortability, technology, and high class results. Forget the boring, conventional design, and grab this uniquely ergonomic iron to make every day a perfect hair day. Its features include static absorbing black titanium floating plates, advanced internal programming to provide instant heat recovery, and the highest grade heat resistant material CROC has to offer.

## #1 keratin treatment iron

Smooth one pass glide

Static free non stick black titanium

CROC's unique ergonomic design



- **Stylists' professional choice** for treatments, including all Keratin systems
- **Digital temperature settings** range from 280° – 450° for styling versatility and convenience
- **Automatic shut off:** iron shuts off after 30 minutes of non-use as a safety feature
- **Pure ceramic heaters** generates plenty of negative ions that seal moisture, add silky shine to hair, and a longer lasting style
- **Ventilation system** releases excess high heat, preventing internal and physical damage
- **Dual voltage** capabilities range from 110V – 240V and allows for travel ready styling
- **Black titanium floating plates** reduce static, add shine and create a smooth, effortless glide
- **Conveniently placed digital control buttons**
- **Color changing cool tip**



1-1/2" PLATES

CROCP-RBB (Regular)  
CROCP-WBB (Wet to Dry)



## PREMIUM INFRARED



The CROC Premium Infrared iron reaches the pinnacle of both luxury and technology. We combined an ergonomic, eye catching design with infrared technology to advance this iron to VIP status in the beauty world, putting shinier, sleeker results in your hands. Studies have shown that infrared rays seal in the moisture balance of your hair, preventing damage and dandruff, protecting color treated hair, and removing harmful bacteria and odors. Infrared rays also stimulate blood flow, which in turn assists in hair growth. Healthier, stunning hair is the finishing touch to a beautiful, confident you.

### Infrared technology

Smooth one pass glide

Static free non stick black titanium

CROC's unique ergonomic design



CROC® PREMIUM INFRARED

- **Stylists' professional choice** for treated and/or frizzy hair
- **Infrared benefits** maximizes any effect of styling or treatment for optimum results within shorter time
- **Digital temperature settings** range from 280° – 450° for styling versatility and convenience
- **Automatic shut off:** iron shuts off after 30 minutes of non-use as a safety feature
- **Double heater technology** uses **pure ceramic heaters** to enable consistent heat and instant heat recovery
- **Pure ceramic heaters** generates plenty of negative ions that seal moisture, add silky shine to hair, and a longer lasting style
- **Ventilation system** releases excess high heat, preventing internal and physical damage
- **Dual voltage** capabilities range from 110V – 240V and allows for travel ready styling
- **Black titanium floating plates** reduce static, add shine and create a smooth, effortless glide
- **Conveniently placed digital control buttons**
- **Color changing cool tip**



1-1/2" PLATES  
CROCP-IBT



Powerful Technology. Superior Results. Designed in *California*.

The New CROC Classic iron does more than just straighten hair. Designed for comfort with its unique shape, it provides endless possibilities for any hair type, and produces beautiful, lasting results.



- **Stylists' professional choice** for treatments, including all Keratin systems
- **Digital temperature settings** range from 280° – 450° for styling versatility and convenience
- **Automatic shut off:** iron shuts off after 30 minutes of non-use as a safety feature
- **Pure ceramic heaters** enable instant heat recovery, to provide consistent heat during use
- **Ventilation system** releases excess high heat, preventing internal and physical damage
- **Dual voltage** capabilities range from 110V – 240V and allows for travel ready styling
- **Black titanium plates** reduce static, add shine and create a smooth, effortless glide
- **Light up display**



## THE NEW CLASSIC

DESIGNED AND INNOVATED IN CALIFORNIA

1" PLATES

TNC10RBB

1-1/2" PLATES

TNC15RBB

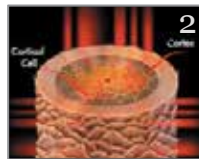




## THE NEW CLASSIC INFRARED



The New CROC Classic Infrared iron brings you the internationally known CROC quality with added infrared technology. Studies have shown that infrared rays seal in the moisture balance of your hair, preventing damage and dandruff, protecting color treated hair, and removing harmful bacteria and odors. Infrared rays also stimulate blood flow, which in turn assists in hair growth. Banish heat damage and dryness, and show off your healthy, shiny hair!



### INFRARED BENEFITS ON HAIR:

- 1 Damaged Hair Cuticle
- 2 Infraray Works On Hair Cuticle
- 3 Repaired

- **Stylists' professional choice** for treated and/or frizzy hair
- **Infrared benefits** maximizes any effect of styling or treatment for optimum results within shorter time
- **Digital temperature settings** range from 280° – 450° for styling versatility and convenience
- **Automatic shut off:** iron shuts off after 30 minutes of non-use as a safety feature
- **Double heater technology** uses **pure ceramic heaters** to enable consistent heat and instant heat recovery
- **Pure ceramic heaters** generate plenty of negative ions that seal moisture, add silky shine to hair, and a longer lasting style
- **Ventilation system** releases excess high heat, preventing internal and physical damage
- **Dual voltage** capabilities range from 110V – 240V and allows for travel ready styling
- **Black titanium plates** reduce static, add shine and create a smooth, effortless glide
- **Conveniently placed digital control buttons**
- **Color changing cool tip**
- **Light up display**



THE NEW CLASSIC INFRA-RED



1-1/2" PLATES  
TNC15IBB



Powerful Technology. Superior Results. Designed in *California*.



## 1" PLATES

CROCH-RBB1



- **Features ATR (Automatic Temperature Reserve)**
- **Automatic shut off:** iron shuts off after 40 minutes of non-use as a safety feature
- ATR & auto shut off keeps it **safe and conserves energy**
- **Floating plates and rounded barrel** creates vivacious curls, flips and straight hair.
- **Far-infrared and ionic benefits**
- **Fully digital :** with FND and 18 heat settings (280°F-450°F)
- **Lock function** for easy storage
- **Dual voltage 100V~240V:** Worldwide usage
- **360° swivel cord** never tangles

## BABY CROC



## 5/8" PLATES

CROC-FBB (Black) CROC-FBW (White) CROC-FBR (Red) CROC-FBF (Fuchsia)

- **Professional quality styling:** A round shape and floating plates for styling versatility. Ideal for shorter hair styles, touch ups, straightens, curls, flips or finishing touches
- **Ceramic-ionic:** Ceramic coated plates emit negative ions
- **Dual voltage:** Travel ready world wide voltage- 240V/ 220V/ 120V/ 110V
- **Instant heat up to 430°F (220°C)**
- **Tangle free swivel cord**
- Accompanied by a **thermal carrying case**

HAIR DRYERS

CROC



Powerful Technology. Superior Results. Designed in *California*.



## Notice a funny smell?

The smell is perfectly normal for the first few uses. CROC wants your product to last as long as possible, so we precoat your dryer's coils with a special ceramic and tourmaline coating which is heat activated. This coating extends your dryer's heating coils life span, as well as produces additional negative ions.

## 1500 watts that feels like 2200 watts.

CROC's ultra-efficient digital technology has created the modern hair dryer. For the first time, you own a dryer that uses less energy but produces higher heat. Lower power consumption saves you money, and increased temperature options save you time.

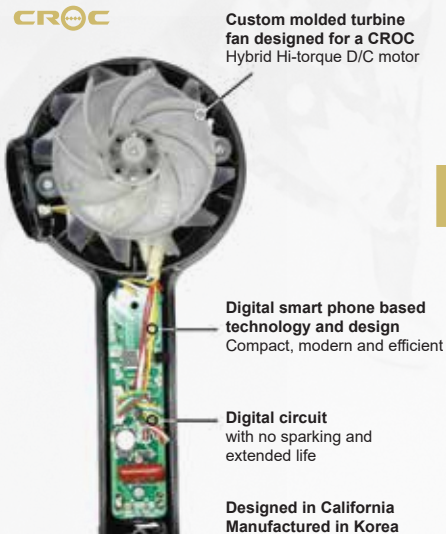
## Ultra light and quiet

The CROC Professional Premium hair dryer is one of the lightest and quietest dryers in the world. We utilize our silent fan technology and efficient high torque DC motor, to successfully reduce noise levels under the average conversation without reducing product performance.

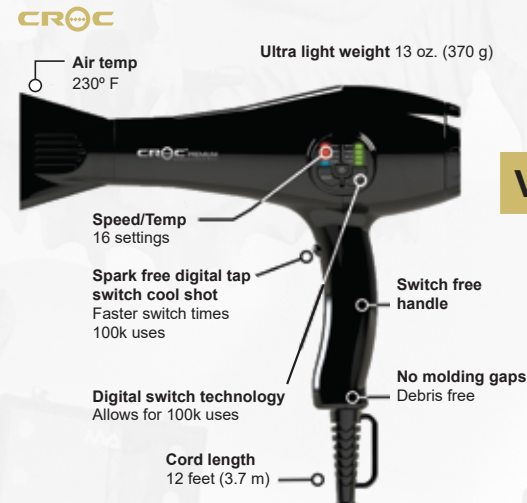
## 100% digital functions

By going digital with CROC's Premium dryer, not only is the product's durability improved, so is its design. These design improvements give professionals superior technology and enhanced results. Goodbye outdated handle switches, hello modern digital function settings!

## CROC vs Other Pro Dryers



**VS**



**VS**





## PREMIUM IC DRYER

### Benefits of digital control:

- Accurate temperature control reduces heat damage
- Accurate digital control provides effective motor performance & longevity
- Energy efficient at 1500W, but feels like 2200W

### Ultra light

### Durable

### Switch free handle

### Silent fan technology

### 100% digital function



SPECIFICATION	CROC PREMIUM DRYER	OTHER DC DRYERS AVERAGE
MOTOR	DC-48V/ 18000 RPM ★★★★★	DC-24V ~ 36V/ 12,000 ~ 15,000 RPM ★★★
MAX POWER CONSUMPTION	1500W (DC motor) ★★★★★	1000W ~ 1350W (DC motor) ★★★
WEIGHT	13 oz (370g) ★★★★★	17 ~ 20 oz (482 ~ 623 g) ★★★★
AIR FLOW	17 m/sec ★★★★★	13 ~ 14 m/sec ★★★★
NOISE LEVEL	59 db ★★★★★	70 ~ 90 db ★★★
CORD	12 ft. (3.7 m) ★★★★★	9 ft. (2.75 m) ★★★★
SETTINGS	16 settings (4 speed 4 heat) plus cool shot button ★★★★★	6 settings (2 speed 3 heat) ★★★★
IONIC	12,000/cc (from Ceramic & Tourmaline) ★★★★★	3,000 ~ 5,000/cc ★★★
MAX TEMPERATURE	340 °F (170 °C) ★★★★★	250°F (125°C) ★★★★



**CROC<sup>®</sup> PREMIUM**  
Intelligent Circuit Dryer

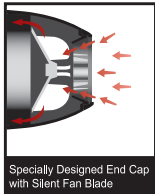
CROC-DPPB (Black)  
CROC-DPPW (White)



Powerful Technology. Superior Results. Designed in *California*.



Ion Technology produces over 3 million Negative Ions



Specially Designed End Cap with Silent Fan Blade



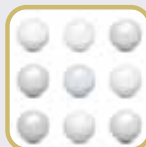
Ion ON/OFF switch



2 Speeds and 3 Heat Settings



- **Powerful ion technology:** This appliance produces negative ions which neutralize the positive ions in your hair. This prevents static in your hair, making it easier to style
- **Ion on/off switch** provides the ability to use with or without Ion therapy
- **Extra lightweight hybrid dc motor** reduces arm pressure for long term use
- **Specially designed cap** with a **silent fan blade** reduces noise and allows optimal air flow
- **2 speed, 3 temperature** settings and **cool shot button**
- **Far-infrared and ionic benefits**
- **Easy to handle, lightweight, ergonomic design**



**CROC<sup>®</sup> HYBRID**

CROC-DHB (Black)  
CROC-DHR (Red)





## TU'KAY DRYER



### BRUSH FREE TECHNOLOGY (BLDC MOTOR):

Tu'Kay dryer offers strong wind velocity with aircraft styled motor, and creates a healthier environment by eliminating the Carbon Dust with a Brush Free Technology.

- High power output
- 90% efficient
- Extended life
- Ultralight & Quiet

### SPECIAL ORDER



#### • Benefits of digital control:

- Accurate temperature control reduces heat damage
- Accurate digital control provides effective motor performance & longevity

#### • 1875 watts

#### • Lightweight - 13 oz. (370 g)

#### • Noise level: 59 db

#### • 12 ft. (3.7 m) long professional cord

#### • 4 speed settings and cool shot button



TU'KAY

Brush Free Technology

CROC-DTR (Red)  
CROC-DTY (Yellow)  
CROC-DTB (Black)



Powerful Technology. Superior Results. Designed in *California*.

**CROC**

**CROC**  
PROFESSIONAL



#### **CROC MAGIC DIFFUSER**

- Dual blowing modes - volume & care
- Saves up to 75% drying / styling time

**CD-MAGIC**





Powerful Technology. Superior Results. Designed in *California.*



**DANNYCO**  
P R O F E S S I O N A L

8000 BLVD. DECARIE, #610 (QC) Canada, H4P 2S4. T: 514-736.2800, F / T : 514-780-0925, 1-866-780-0949

