

**BaBylissPRO®**

# WOOD BLOW-DRY BRUSHES

- Designed for easy flow through the hair
- Flexible nylon bristles with epoxy ball tips
- Natural, one piece, wood handle
- Peg hole on handle
- For short to long, fine to thick hair
- Anti-static and does not pull
- Designed for professionals - Excellent for retail sales



“You can achieve a slick and straight look or volume and curl with minimum effort.”

**DONNA KANG**  
*Mane Society, ON*



“Excellent brush for straightening! It’s smooth, gives body, manageability and control during the blow dry.”

**CLAUDE BAIN**  
*Fiorio Square One, ON*



“These wooden brushes work great! They allow me to smooth out the hair removing frizz and kinks, and create shape with ease. I definitely consider this as my brush of choice when working with resistant or limp hair.”

**KARIM JUMA**  
*Salon Kreative, ON*



“These brushes do not snag but glide easily through the hair and unwind easily from the curl when blow-drying. They are the perfect essential for every blow-dry, every time.”

**ANDREA SAMPSON**  
*Dannycos Professional Master Artist & National Director of Education*

Dannycos Professional is an affiliate of BaBylissPro™.

AVAILABLE IN  
**4 MODELS**

## **BABWB25C**

1" barrel

**For ear length,  
fine hair**

## **BABWB35C**

1-3/8" barrel

**For chin length,  
fine to normal hair**

## **BABWB45C**

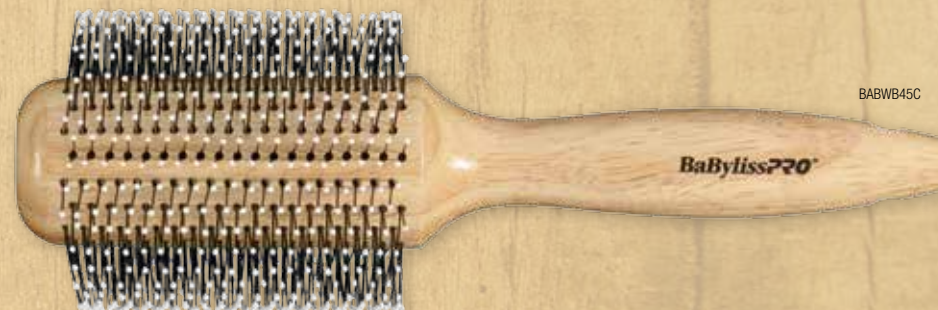
1-3/4" barrel

**For shoulder length,  
thick hair**

## **BABWB50C**

2" barrel

**For mid-back to  
extra-long length,  
thick hair**



**CLICK HERE TO VIEW  
OUR YOUTUBE VIDEO**